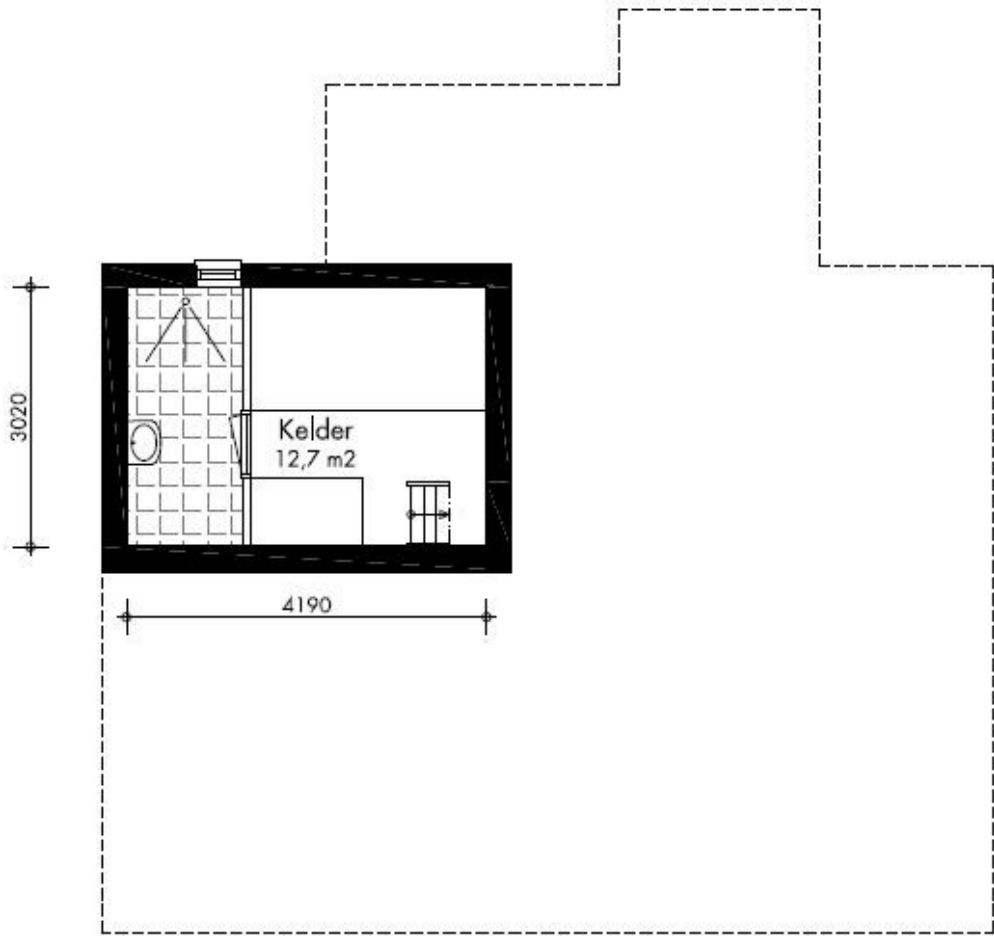


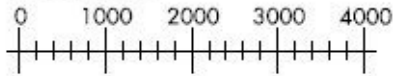
Begane grond Bruto oppervlakte 79,5 m²

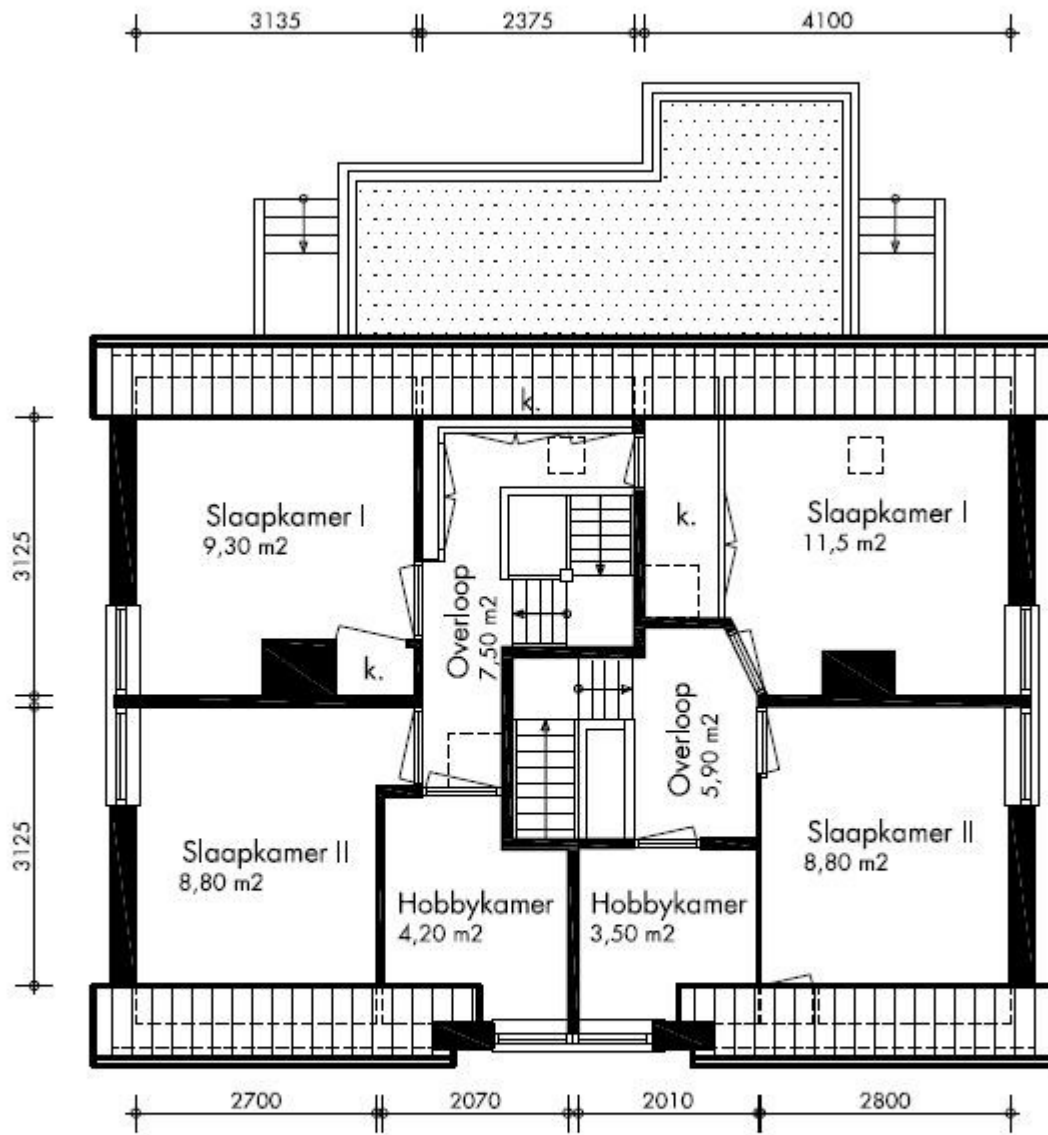




Kelder

Bruto oppervlakte 12,7 m²

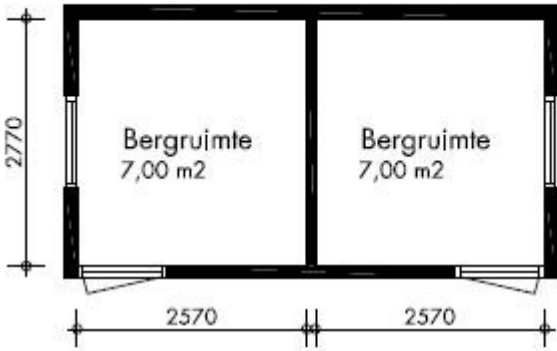




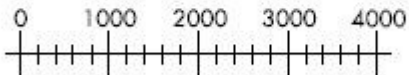
Verdieping

Bruto oppervlakte 59,5 m²



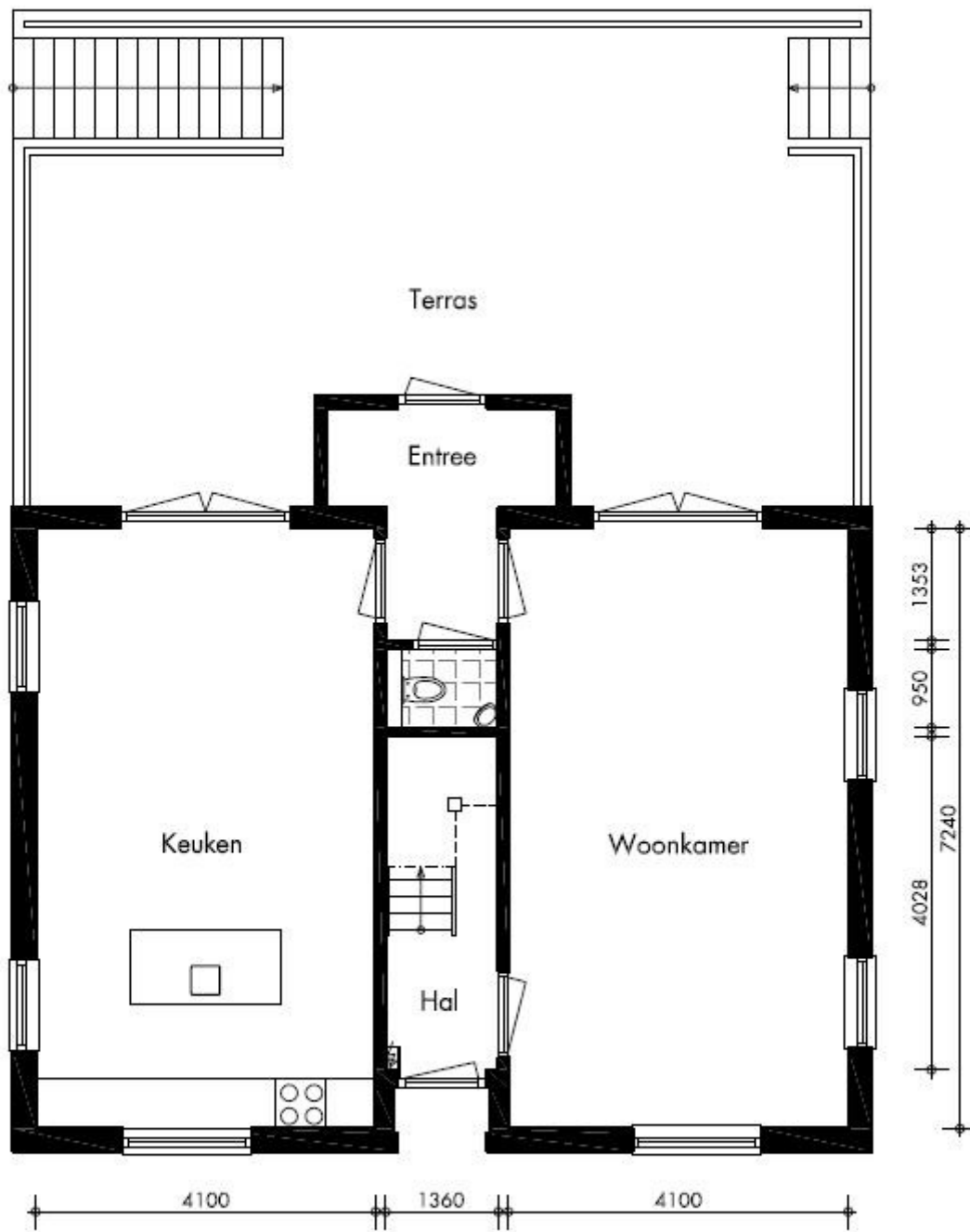


Begane grond Bruto oppervlakte 14,0 m²

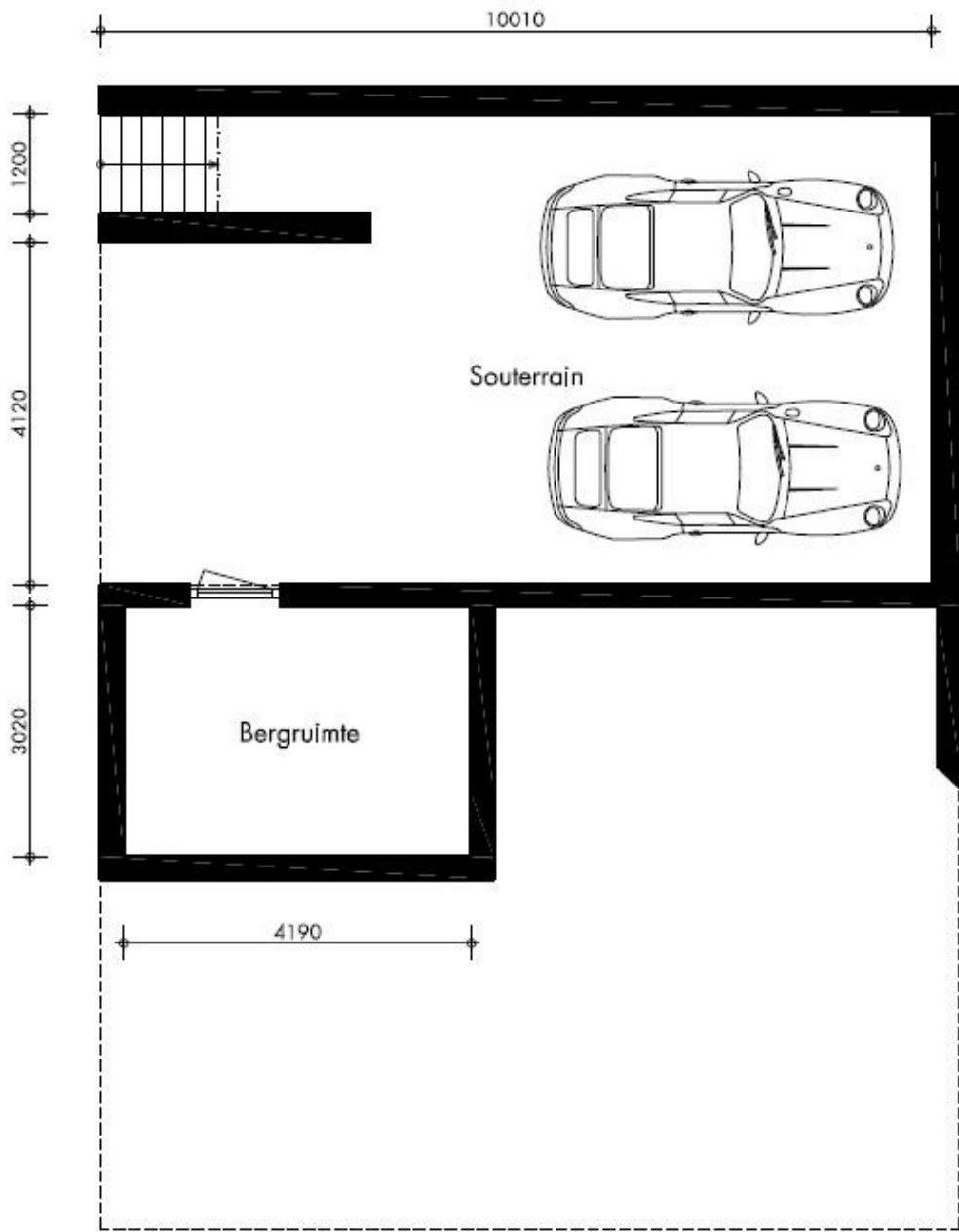




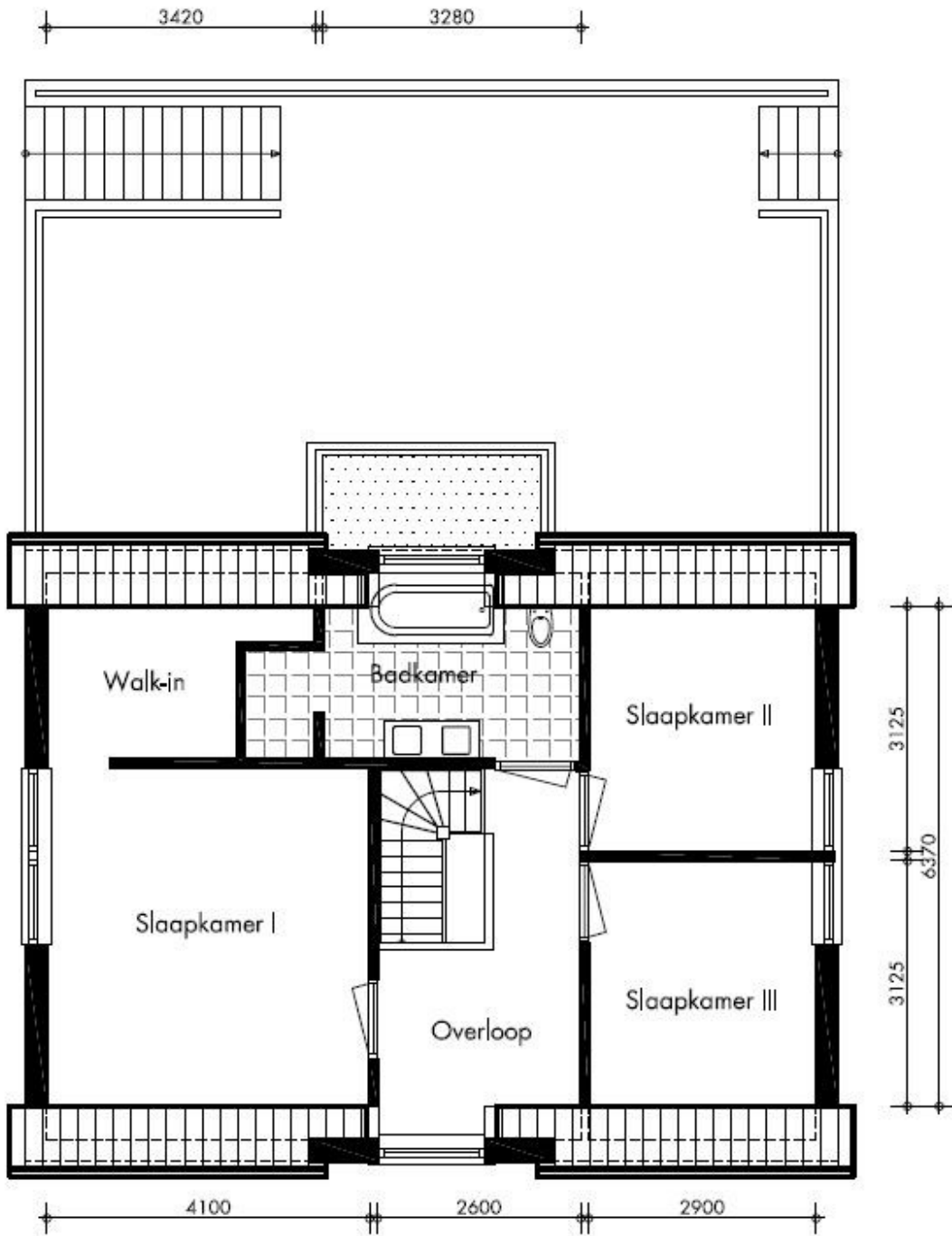
Voorstel / impressie - samenvoegen van de woningen tot één riant woonhuis



Begane grond



Souterrain



Verdieping